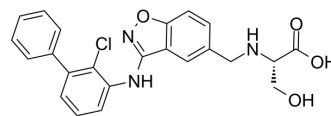


PD-1/PD-L1-IN-17

Cat. No.:	HY-144447
CAS No.:	2851938-36-6
Molecular Formula:	C ₂₃ H ₂₀ ClN ₃ O ₄
Molecular Weight:	437.88
Target:	PD-1/PD-L1
Pathway:	Immunology/Inflammation
Storage:	Please store the product under the recommended conditions in the Certificate of Analysis.



BIOLOGICAL ACTIVITY

Description

PD-1/PD-L1-IN-17 (Compound P20) is a potent inhibitor of PD-1/PD-L1 with an IC₅₀ value of 26.8 nM. PD-1/PD-L1-IN-17 is a promising lead compound for the development of inhibitors of the PD-1/PD-L1 interaction. PD-1/PD-L1-IN-17 has the potential for the research of cancer diseases^[1].

REFERENCES

[1]. Huang X, et al. Design, synthesis, and structure-activity relationship of PD-1/PD-L1 inhibitors with a benzo[d]isoxazole scaffold. *Bioorg Med Chem Lett*. 2021 Nov 15;52:128403.

Caution: Product has not been fully validated for medical applications. For research use only.

Tel: 609-228-6898

Fax: 609-228-5909

E-mail: tech@MedChemExpress.com

Address: 1 Deer Park Dr, Suite Q, Monmouth Junction, NJ 08852, USA