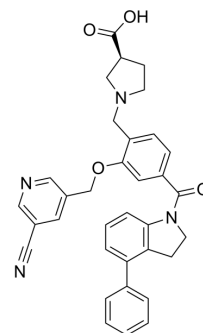


## PD-1/PD-L1-IN-16

Cat. No.:	HY-144443
Molecular Formula:	C <sub>34</sub> H <sub>30</sub> N <sub>4</sub> O <sub>4</sub>
Molecular Weight:	558.63
Target:	PD-1/PD-L1
Pathway:	Immunology/Inflammation
Storage:	Please store the product under the recommended conditions in the Certificate of Analysis.



### BIOLOGICAL ACTIVITY

#### Description

PD-1/PD-L1-IN-16 (Compound M23) is a potent inhibitor of PD-1/PD-L1 with an IC<sub>50</sub> value of 53.2 nM. PD-1/PD-L1-IN-16 has the potential for the research of tumor immunoresearch<sup>[1]</sup>.

### REFERENCES

[1]. Meng Y, et al. Discovery of 4-phenylindolines containing a (5-cyanopyridin-3-yl)methoxy moiety as potent inhibitors of the PD-1/PD-L1 interaction. *Bioorg Med Chem Lett.* 2022 May 1;63:128647

**Caution: Product has not been fully validated for medical applications. For research use only.**

Tel: 609-228-6898

Fax: 609-228-5909

E-mail: tech@MedChemExpress.com

Address: 1 Deer Park Dr, Suite Q, Monmouth Junction, NJ 08852, USA