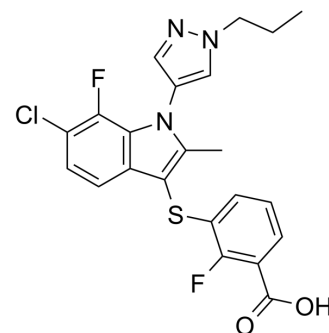


PAT-048

| | |
|--------------------|---|
| Cat. No.: | HY-123522 |
| CAS No.: | 1359983-15-5 |
| Molecular Formula: | C ₂₂ H ₁₈ ClF ₂ N ₃ O ₂ S |
| Molecular Weight: | 461.91 |
| Target: | Phosphodiesterase (PDE) |
| Pathway: | Metabolic Enzyme/Protease |
| Storage: | Please store the product under the recommended conditions in the Certificate of Analysis. |



BIOLOGICAL ACTIVITY

| | |
|---------------------------|--|
| Description | PAT-048 is a potent, selective and orally active autotaxin inhibitor, inhibits IL-6 mRNA expression, but shows no effect on autotaxin protein and pulmonary lysophosphatidic acid (LPA) production in lung fibrosis model. PAT-048 shows an IC ₅₀ and IC ₉₀ of 20 nM and 200 nM for autotaxin in mouse plasma. PAT-048 reduces dermal fibrosis in vivo ^{[1][2]} . |
| IC ₅₀ & Target | IC ₅₀ : 20 nM (Autotaxin, in mouse plasma) ^[1] IC ₉₀ : 200 nM (Autotaxin, in mouse plasma) ^[1] |

REFERENCES

- [1]. Castelino FV, et al. An Autotaxin/Lysophosphatidic Acid/Interleukin-6 Amplification Loop Drives Scleroderma Fibrosis. *Arthritis Rheumatol.* 2016 Dec;68(12):2964-2974.
- [2]. Black KE, et al. Autotaxin activity increases locally following lung injury, but is not required for pulmonary lysophosphatidic acid production or fibrosis. *FASEB J.* 2016 Jun;30(6):2435-50.

Caution: Product has not been fully validated for medical applications. For research use only.

Tel: 609-228-6898

Fax: 609-228-5909

E-mail: tech@MedChemExpress.com

Address: 1 Deer Park Dr, Suite Q, Monmouth Junction, NJ 08852, USA