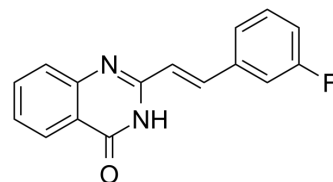


PARP1-IN-6

Cat. No.:	HY-139879
CAS No.:	1654735-36-0
Molecular Formula:	C ₁₆ H ₁₁ FN ₂ O
Molecular Weight:	266.27
Target:	PARP
Pathway:	Cell Cycle/DNA Damage; Epigenetics
Storage:	Please store the product under the recommended conditions in the Certificate of Analysis.



BIOLOGICAL ACTIVITY

Description

PARP1-IN-6 is a dual tubulin/PARP-1 inhibitor with IC₅₀ values of 0.94 and 0.48 μM, respectively.

REFERENCES

[1]. Zheng L, et al. Discovery of a Dual Tubulin and Poly(ADP-Ribose) Polymerase-1 Inhibitor by Structure-Based Pharmacophore Modeling, Virtual Screening, Molecular Docking, and Biological Evaluation. *J Med Chem.* 2021 Nov 11;64(21):15702-15715.

Caution: Product has not been fully validated for medical applications. For research use only.

Tel: 609-228-6898

Fax: 609-228-5909

E-mail: tech@MedChemExpress.com

Address: 1 Deer Park Dr, Suite Q, Monmouth Junction, NJ 08852, USA