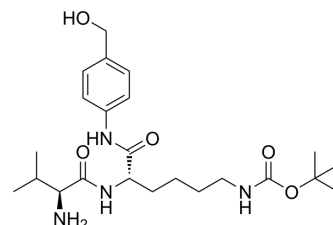


## PAB-Val-Lys-Boc

<b>Cat. No.:</b>	HY-138651		
<b>CAS No.:</b>	1432969-86-2		
<b>Molecular Formula:</b>	C <sub>23</sub> H <sub>38</sub> N <sub>4</sub> O <sub>5</sub>		
<b>Molecular Weight:</b>	450.57		
<b>Target:</b>	ADC Linker		
<b>Pathway:</b>	Antibody-drug Conjugate/ADC Related		
<b>Storage:</b>	Powder	-20°C	3 years
		4°C	2 years
	In solvent	-80°C	6 months
		-20°C	1 month



### SOLVENT & SOLUBILITY

<b>In Vitro</b>	DMSO : 125 mg/mL (277.43 mM; Need ultrasonic)			
		Solvent Concentration	Mass	
			1 mg	5 mg
	<b>Preparing Stock Solutions</b>	<b>1 mM</b>	2.2194 mL	11.0971 mL
		<b>5 mM</b>	0.4439 mL	2.2194 mL
		<b>10 mM</b>	0.2219 mL	1.1097 mL
	Please refer to the solubility information to select the appropriate solvent.			
<b>In Vivo</b>	<ol style="list-style-type: none"> <li>Add each solvent one by one: 10% DMSO &gt;&gt; 40% PEG300 &gt;&gt; 5% Tween-80 &gt;&gt; 45% saline Solubility: ≥ 2.08 mg/mL (4.62 mM); Clear solution</li> <li>Add each solvent one by one: 10% DMSO &gt;&gt; 90% (20% SBE-β-CD in saline) Solubility: ≥ 2.08 mg/mL (4.62 mM); Clear solution</li> <li>Add each solvent one by one: 10% DMSO &gt;&gt; 90% corn oil Solubility: ≥ 2.08 mg/mL (4.62 mM); Clear solution</li> </ol>			

### BIOLOGICAL ACTIVITY

<b>Description</b>	PAB-Val-Lys-Boc is a cleavable ADC linker used in the synthesis of antibody-drug conjugates (ADCs) for stimulating an immune response <sup>[1]</sup> .	
<b>IC<sub>50</sub> &amp; Target</b>	Protease Cleavable	Cleavable

### REFERENCES

**Caution: Product has not been fully validated for medical applications. For research use only.**

Tel: 609-228-6898

Fax: 609-228-5909

E-mail: [tech@MedChemExpress.com](mailto:tech@MedChemExpress.com)

Address: 1 Deer Park Dr, Suite Q, Monmouth Junction, NJ 08852, USA