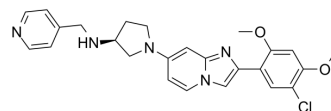


OTS186935

Cat. No.:	HY-122181
CAS No.:	2093400-18-9
Molecular Formula:	C ₂₅ H ₂₆ ClN ₅ O ₂
Molecular Weight:	464
Target:	Histone Methyltransferase
Pathway:	Epigenetics
Storage:	Please store the product under the recommended conditions in the Certificate of Analysis.



BIOLOGICAL ACTIVITY

Description	OTS186935 is a potent protein methyltransferase SUV39H2 inhibitor with an IC ₅₀ of 6.49 nM. OTS186935 shows significant inhibition of tumor growth in mouse xenograft models without any detectable toxicity. OTS193320 regulates the production of γ-H2AX in cancer cells ^[1] .	
IC₅₀ & Target	IC ₅₀ : 6.49 nM (SUV39H2) ^[1]	
In Vitro	OTS186935 inhibits A549 cell growth with an IC ₅₀ of 0.67 μM ^[1] . MCE has not independently confirmed the accuracy of these methods. They are for reference only.	
In Vivo	OTS186935 (10 mg/kg or 25 mg/kg; intravenously; once daily for 14 days) exhibits growth suppressive effects in human cancer cell line derived xenograft models ^[1] . MCE has not independently confirmed the accuracy of these methods. They are for reference only.	
	Animal Model:	Female NOD.CB17-Prkdcscid/J mice (bearing MDA-MB-231 cells) ^[1]
	Dosage:	10 mg/kg
	Administration:	Intravenously; once daily for 14 days
	Result:	Tumor growth inhibition of 42.6% on day 14.
	Animal Model:	Female BALB/cAJcl-nu/nu mice (bearing A549 cells) ^[1]
	Dosage:	25 mg/kg
	Administration:	Intravenously; once daily for 14 days
	Result:	Yielded a tumor growth inhibition of 60.8% without significant body weight loss or toxicity.

CUSTOMER VALIDATION

-
- Acta Neuropathol. 2022 Sep 7.

See more customer validations on www.MedChemExpress.com

REFERENCES

[1]. Vougiouklakis T, et al. Development of novel SUV39H2 inhibitors that exhibit growth suppressive effects in mouse xenograft models and regulate the phosphorylation of H2AX. Oncotarget. 2018 Aug 7;9(61):31820-31831.

Caution: Product has not been fully validated for medical applications. For research use only.

Tel: 609-228-6898

Fax: 609-228-5909

E-mail: tech@MedChemExpress.com

Address: 1 Deer Park Dr, Suite Q, Monmouth Junction, NJ 08852, USA