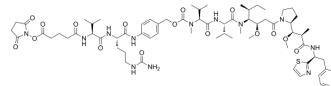


## OSu-Glu-VC-PAB-MMAD

<b>Cat. No.:</b>	HY-136315
<b>Molecular Formula:</b>	C <sub>69</sub> H <sub>102</sub> N <sub>12</sub> O <sub>16</sub> S
<b>Molecular Weight:</b>	1387.68
<b>Target:</b>	Drug-Linker Conjugates for ADC; Microtubule/Tubulin
<b>Pathway:</b>	Antibody-drug Conjugate/ADC Related; Cell Cycle/DNA Damage; Cytoskeleton
<b>Storage:</b>	Please store the product under the recommended conditions in the Certificate of Analysis.



### BIOLOGICAL ACTIVITY

<b>Description</b>	OSu-Glu-VC-PAB-MMAD is a agent-linker conjugate for ADC with potent antitumor activity by using MMAD (a potent tubulin inhibitor), linked via the cleavable ADC linker OSu-Glu-VC-PAB.
<b>IC<sub>50</sub> &amp; Target</b>	Auristatin

### REFERENCES

[1]. Chudasama V, et al. Recent advances in the construction of antibody-drug conjugates. Nat Chem. 2016 Feb;8(2):114-9.

**Caution: Product has not been fully validated for medical applications. For research use only.**

Tel: 609-228-6898

Fax: 609-228-5909

E-mail: tech@MedChemExpress.com

Address: 1 Deer Park Dr, Suite Q, Monmouth Junction, NJ 08852, USA