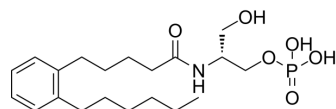


ONO-0740556

Cat. No.:	HY-150204
CAS No.:	2250210-69-4
Molecular Formula:	C ₂₀ H ₃₄ NO ₆ P
Molecular Weight:	415.46
Target:	LPL Receptor
Pathway:	GPCR/G Protein
Storage:	4°C, sealed storage, away from moisture * In solvent : -80°C, 6 months; -20°C, 1 month (sealed storage, away from moisture)



SOLVENT & SOLUBILITY

In Vitro

DMSO : 75 mg/mL (180.52 mM; ultrasonic and warming and heat to 60°C)

Solvent	Mass	Concentration		
		1 mg	5 mg	10 mg
Preparing Stock Solutions	1 mM	2.4070 mL	12.0349 mL	24.0697 mL
	5 mM	0.4814 mL	2.4070 mL	4.8139 mL
	10 mM	0.2407 mL	1.2035 mL	2.4070 mL

Please refer to the solubility information to select the appropriate solvent.

BIOLOGICAL ACTIVITY

Description

ONO-0740556 is a potent Gi-coupled human lysophosphatidic acid receptor 1 (LPA1) agonist with an EC₅₀ value of 0.26 nM^[1]

REFERENCES

[1]. Hiroaki Akasaka, et al. Structure of the active Gi-coupled human lysophosphatidic acid receptor 1 complexed with a potent agonist. Nat Commun. 2022 Sep 15;13(1):5417.

Caution: Product has not been fully validated for medical applications. For research use only.

Tel: 609-228-6898

Fax: 609-228-5909

E-mail: tech@MedChemExpress.com

Address: 1 Deer Park Dr, Suite Q, Monmouth Junction, NJ 08852, USA