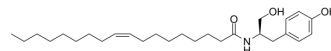


OMDM-2

Cat. No.:	HY-103342
CAS No.:	616884-63-0
Molecular Formula:	C ₂₇ H ₄₅ NO ₃
Molecular Weight:	431.65
Target:	Endogenous Metabolite
Pathway:	Metabolic Enzyme/Protease
Storage:	Please store the product under the recommended conditions in the Certificate of Analysis.



BIOLOGICAL ACTIVITY

Description	OMDM-2 is a potent, selective and metabolically stable inhibitor of anandamide cellular uptake (ACU), with a K _i of 3.0 μM ^[1] .
IC ₅₀ & Target	K _i : 3.0 μM (anandamide cellular uptake) ^[1]
In Vitro	OMDM-2 shows poor affinity for either CB1 (K _i =5.1 μM) or CB2 (K _i >10 μM) receptors in rat brain and spleen membranes, respectively; OMDM-2 has almost no activity at vanilloid receptors in the intracellular calcium assay carried out with intact cells over-expressing the human VR1 (EC ₅₀ =10 μM), and no activity as inhibitors of FAAH in N18TG2 cell membranes (K _i >50 μM) ^[1] . MCE has not independently confirmed the accuracy of these methods. They are for reference only.

REFERENCES

[1]. Ortar G, et al. Novel selective and metabolically stable inhibitors of anandamide cellular uptake. *Biochem Pharmacol.* 2003 May 1;65(9):1473-81.

Caution: Product has not been fully validated for medical applications. For research use only.

Tel: 609-228-6898

Fax: 609-228-5909

E-mail: tech@MedChemExpress.com

Address: 1 Deer Park Dr, Suite Q, Monmouth Junction, NJ 08852, USA