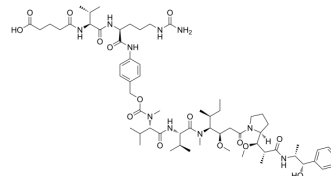


OH-Glu-Val-Cit-PAB-MMAE

Cat. No.:	HY-148245
CAS No.:	1895916-23-0
Molecular Formula:	C ₆₃ H ₁₀₀ N ₁₀ O ₁₅
Molecular Weight:	1237.53
Target:	Drug-Linker Conjugates for ADC
Pathway:	Antibody-drug Conjugate/ADC Related
Storage:	-20°C, sealed storage, away from moisture and light * In solvent : -80°C, 6 months; -20°C, 1 month (sealed storage, away from moisture and light)



SOLVENT & SOLUBILITY

In Vitro

DMSO : 180 mg/mL (145.45 mM; Need ultrasonic)

Concentration	Solvent	Mass		
		1 mg	5 mg	10 mg
1 mM		0.8081 mL	4.0403 mL	8.0806 mL
5 mM		0.1616 mL	0.8081 mL	1.6161 mL
10 mM		0.0808 mL	0.4040 mL	0.8081 mL

Please refer to the solubility information to select the appropriate solvent.

BIOLOGICAL ACTIVITY

Description

OH-Glu-Val-Cit-PAB-MMAE consists a cleavable ADC linker (OH-Glu-Val-Cit-PAB) and a potent tubulin inhibitor (MMAE). SuO-Glu-Val-Cit-PAB-MMAE can be used in the synthesis of antibody-drug conjugates (ADCs)^[1].

REFERENCES

[1]. Gemma E Mudd, et al. Discovery of BT8009: A Nectin-4 Targeting Bicycle Toxin Conjugate for the Treatment of Cancer. J Med Chem. 2022 Nov 10;65(21):14337-14347.

Caution: Product has not been fully validated for medical applications. For research use only.

Tel: 609-228-6898

Fax: 609-228-5909

E-mail: tech@MedChemExpress.com

Address: 1 Deer Park Dr, Suite Q, Monmouth Junction, NJ 08852, USA