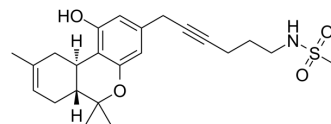


## O-2050

<b>Cat. No.:</b>	HY-133533
<b>CAS No.:</b>	1883545-42-3
<b>Molecular Formula:</b>	C <sub>23</sub> H <sub>31</sub> NO <sub>4</sub> S
<b>Molecular Weight:</b>	417.56
<b>Target:</b>	Cannabinoid Receptor
<b>Pathway:</b>	GPCR/G Protein; Neuronal Signaling
<b>Storage:</b>	Please store the product under the recommended conditions in the Certificate of Analysis.



### BIOLOGICAL ACTIVITY

<b>Description</b>	O-2050 is a high affinity cannabinoid CB <sub>1</sub> receptor antagonist with a K <sub>i</sub> of 2.5 nM. O-2050 inhibits cannabinoid CB <sub>2</sub> receptor (K <sub>i</sub> =0.2 nM). O-2050 can cause locomotor stimulation in mice <sup>[1]</sup> .	
<b>IC<sub>50</sub> &amp; Target</b>	CB1 2.5 nM (K <sub>i</sub> )	CB2 0.2 nM (K <sub>i</sub> )
<b>In Vivo</b>	O-2050 (1, 3, 10, 30 mg/kg; ip; pretreatment 30 mins) produces significant and dose-dependent decreases in food intake in mice. O-2050 (10, 30 mg/kg) significantly causes locomotor stimulation <sup>[1]</sup> . MCE has not independently confirmed the accuracy of these methods. They are for reference only.	

### REFERENCES

[1]. Jenny L Wiley, et al. Structural and pharmacological analysis of O-2050, a putative neutral cannabinoid CB(1) receptor antagonist. Eur J Pharmacol. 2011 Jan 25;651(1-3):96-105.

**Caution: Product has not been fully validated for medical applications. For research use only.**

Tel: 609-228-6898

Fax: 609-228-5909

E-mail: tech@MedChemExpress.com

Address: 1 Deer Park Dr, Suite Q, Monmouth Junction, NJ 08852, USA