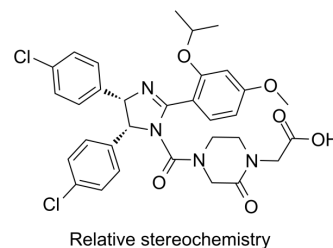


Nutlin carboxylic acid

Cat. No.:	HY-128837		
CAS No.:	2249750-27-2		
Molecular Formula:	C ₃₂ H ₃₂ Cl ₂ N ₄ O ₆		
Molecular Weight:	639.53		
Target:	Ligands for E3 Ligase		
Pathway:	PROTAC		
Storage:	Powder	-20°C	3 years
		4°C	2 years
	In solvent	-80°C	2 years
		-20°C	1 year



SOLVENT & SOLUBILITY

In Vitro	DMSO : 50 mg/mL (78.18 mM; Need ultrasonic and warming)					
	Preparing Stock Solutions	Solvent	Mass	1 mg	5 mg	10 mg
		Concentration				
		1 mM		1.5636 mL	7.8182 mL	15.6365 mL
5 mM			0.3127 mL	1.5636 mL	3.1273 mL	
	10 mM		0.1564 mL	0.7818 mL	1.5636 mL	
Please refer to the solubility information to select the appropriate solvent.						
In Vivo	<ol style="list-style-type: none"> Add each solvent one by one: 10% DMSO >> 40% PEG300 >> 5% Tween-80 >> 45% saline Solubility: ≥ 2.75 mg/mL (4.30 mM); Clear solution Add each solvent one by one: 10% DMSO >> 90% (20% SBE-β-CD in saline) Solubility: ≥ 2.75 mg/mL (4.30 mM); Clear solution Add each solvent one by one: 10% DMSO >> 90% corn oil Solubility: ≥ 2.75 mg/mL (4.30 mM); Clear solution 					

BIOLOGICAL ACTIVITY

Description	Nutlin carboxylic acid (MDM2 ligand 1) is the Nutlin 3-based MDM2 ligand. Nutlin carboxylic acid can be connected to the ligand for protein by a linker to form PROTAC ^[1] .
IC₅₀ & Target	MDM2 ^[1] .

REFERENCES

Caution: Product has not been fully validated for medical applications. For research use only.

Tel: 609-228-6898

Fax: 609-228-5909

E-mail: tech@MedChemExpress.com

Address: 1 Deer Park Dr, Suite Q, Monmouth Junction, NJ 08852, USA