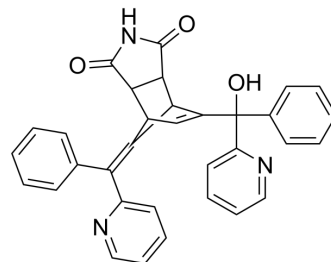


Norbormide

Cat. No.:	HY-122331
CAS No.:	991-42-4
Molecular Formula:	C ₃₃ H ₂₅ N ₃ O ₃
Molecular Weight:	511.57
Target:	Calcium Channel
Pathway:	Membrane Transporter/Ion Channel; Neuronal Signaling
Storage:	Please store the product under the recommended conditions in the Certificate of Analysis.



BIOLOGICAL ACTIVITY

Description

Norbormide shows vasoconstrictor activity by blocking calcium channel. The activity of Norbormide is species- and tissue-specific, endothelium independent, and is restricted to the peripheral arteries of rat. Norbormide is also a toxicant, and the oral LD₅₀s in mouse, hamster, guinea pig and rabbit are 2250, 140, 620, and 1000 mg/kg^[1].

REFERENCES

[1]. Bova S, et al. Norbormide: a calcium entry blocker with selective vasoconstrictor activity in rat peripheral arteries. *Cardiovasc Drug Rev.* 2001 Fall;19(3):226-33.

Caution: Product has not been fully validated for medical applications. For research use only.

Tel: 609-228-6898

Fax: 609-228-5909

E-mail: tech@MedChemExpress.com

Address: 1 Deer Park Dr, Suite Q, Monmouth Junction, NJ 08852, USA