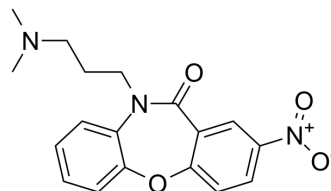


Nitroxazepine

Cat. No.:	HY-101684
CAS No.:	47439-36-1
Molecular Formula:	C ₁₈ H ₁₉ N ₃ O ₄
Molecular Weight:	341.36
Target:	Serotonin Transporter
Pathway:	Neuronal Signaling
Storage:	Please store the product under the recommended conditions in the Certificate of Analysis.



BIOLOGICAL ACTIVITY

Description	Nitroxazepine is a tricyclic antidepressant (TCA) for the research of depression. Nitroxazepine acts as a serotonin-norepinephrine reuptake inhibitor.
IC₅₀ & Target	serotonin-norepinephrine reuptake
In Vitro	<p>The in vitro effect of Nitroxazepine (Sintamil), as a modulator alone and in combination with hydroxyurea (HU), on cytotoxicity is studied in 16 cases of human chronic myeloid leukemia (CML). The cytotoxicity of the drugs as a function of the exposure dose (HU, 100 μM; Nitroxazepine, 10 μg/mL) and the exposure time (1 h) to the agent is investigated. Cytotoxicity is evaluated as the inhibition of incorporation of [³H-methyl]thymidine in the nucleic acids of CML cells. Cytotoxicity of HU is greatly enhanced (P<0.001) by 1 h exposure of the CML cells to Nitroxazepine. The present data indicate that Nitroxazepine potentiates the cytotoxic activity of HU in CML cells^[1]. Nitroxazepine is indicated for the treatment of nocturnal enuresis. Nitroxazepine has similar effects to imipramine, but with certain advantages, such as lower anticholinergic side effects.</p> <p>MCE has not independently confirmed the accuracy of these methods. They are for reference only.</p>

REFERENCES

[1]. Pradhan SG, et al. Augmentation of hydroxyurea cytotoxicity by sintamil in human chronic myeloid leukemia cells. Tumori. 1986 Oct 31;72(5):507-10.

Caution: Product has not been fully validated for medical applications. For research use only.

Tel: 609-228-6898

Fax: 609-228-5909

E-mail: tech@MedChemExpress.com

Address: 1 Deer Park Dr, Suite Q, Monmouth Junction, NJ 08852, USA