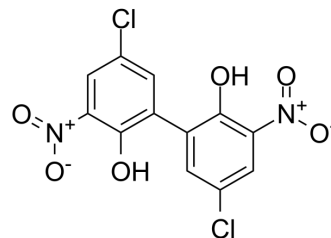


## Niclofolan

|                    |  |
|--------------------|--|
| Cat. No.:          | HY-113715  |
| CAS No.:           | 10331-57-4   |
| Molecular Formula: | C <sub>12</sub> H <sub>6</sub> Cl <sub>2</sub> N <sub>2</sub> O <sub>6</sub>                   |
| Molecular Weight:  | 345.09   |
| Target:            | Parasite   |
| Pathway:           | Anti-infection   |
| Storage:           | 4°C, protect from light<br>* In solvent : -80°C, 6 months; -20°C, 1 month (protect from light) |



### BIOLOGICAL ACTIVITY

| Description     | Niclofolan (BAY 9015) is an orally active anthelmintic agent. Niclofolan can be used in the research of parasite infection <sup>[1][2]</sup> [3].   |  |
|-----------------|---|--|
| In Vitro        | Niclofolan (0.12 mg/mL, 60 min) is effective against Gyrodactylus sp. under in vitro conditions <sup>[3]</sup> . MCE has not independently confirmed the accuracy of these methods. They are for reference only. Cell Viability Assay <sup>[3]</sup>  |  |
|                 | Cell Line:  | Gyrodactylus sp. (parasite)  |
|                 | Concentration:  | 0.12 mg/mL   |
|                 | Incubation Time:  | 60 min   |
|                 | Result:   | Reduced the number of live Gyrodactylus sp. By 100%.   |
| In Vivo         | Niclofolan (2 mg/kg, intramuscular injection) is effective against fasciola hepatica infected sheep <sup>[2]</sup> . Niclofolan (1 or 2 mg/kg, oral gavage) shows therapeutic effects against P.iloktsuensis infected rats <sup>[4]</sup> . MCE has not independently confirmed the accuracy of these methods. They are for reference only. |  |
|                 | Animal Model:   | fasciola hepatica infected sheep <sup>[2]</sup>  |
|                 | Dosage:   | 2 mg/kg  |
|                 | Administration:   | Intramuscular injection  |
|                 | Result:   | Showed effectiveness against the infection and produced no untoward effects except for transient signs of pain at the site of injection. |
|                 | Animal Model:   | Rats infected with P.iloktsuensis <sup>[4]</sup>   |
|                 | Dosage:   | 1 mg/kg, daily for 3 days; 2 mg/kg every other day for 2 times.  |
| Administration: | Oral gavage   |  |

---

|  |         |                            |
|--|---------|----------------------------|
|  | Result: | Reduced the worms in rats. |
|--|---------|----------------------------|

---

---

## REFERENCES

- [1]. T Eckhardt, Treatment of human fascioliasis with niclofolan. *Gastroenterology*. 1981 Oct; 81(4):795-8.
- [2]. B H Ali, T Hassan, et al. The effect of niclofolan on desert sheep experimentally infected with immature *Fasciola gigantica*. *J Vet Pharmacol Ther*. 1985 Dec;8(4):398-403.
- [3]. Santamarina M. T., et al. Anthelmintic treatment against *Gyrodactylus* sp. infecting rainbow trout *Oncorhynchus mykiss*. *Diseases of Aquatic Organisms*, 1991 10(1): 39-43.
- [4]. Rim H J, et al. Experimental chemotherapeutic effects of niclofolan (Bayer 9015, Bilevon) on the animals infected with *Paragonimus westermani* or *P. iloktsuenensis*. *The Korean Journal of Parasitology*, 1976, 14(2): 140-146.
- 

**Caution: Product has not been fully validated for medical applications. For research use only.**

Tel: 609-228-6898

Fax: 609-228-5909

E-mail: [tech@MedChemExpress.com](mailto:tech@MedChemExpress.com)

Address: 1 Deer Park Dr, Suite Q, Monmouth Junction, NJ 08852, USA