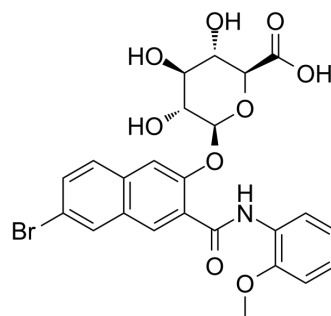


## Naphthol AS-BI glucuronide

Cat. No.:	HY-137833
CAS No.:	37-87-6
Molecular Formula:	C <sub>24</sub> H <sub>22</sub> BrNO <sub>9</sub>
Molecular Weight:	548.34
Target:	Biochemical Assay Reagents
Pathway:	Others
Storage:	Please store the product under the recommended conditions in the Certificate of Analysis.



### BIOLOGICAL ACTIVITY

#### Description

Naphthol AS-BI β-D-Glucuronide is a biochemical reagent that can be used as a biological material or organic compound for life science related research.

**Caution: Product has not been fully validated for medical applications. For research use only.**

Tel: 609-228-6898

Fax: 609-228-5909

E-mail: [tech@MedChemExpress.com](mailto:tech@MedChemExpress.com)

Address: 1 Deer Park Dr, Suite Q, Monmouth Junction, NJ 08852, USA