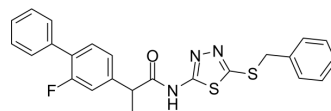


NTPDase-IN-2

Cat. No.:	HY-143288
CAS No.:	2883147-47-3
Molecular Formula:	C ₂₄ H ₂₀ FN ₃ OS ₂
Molecular Weight:	449.56
Target:	Phosphatase
Pathway:	Metabolic Enzyme/Protease
Storage:	Please store the product under the recommended conditions in the Certificate of Analysis.



BIOLOGICAL ACTIVITY

Description	NTPDase-IN-2 (compound 5g) is a selective NTPDase inhibitor with IC ₅₀ s of 0.04 and 2.27 μM for h-NTPDase-2/-8, respectively. NTPDase-IN-2 non-competitively inhibits h-NTPDase-1/-2 with a K _m of 74 μM for h-NTPDase-2. NTPDase-IN-2 can be used in studies of cancer, immunologic disorders as well as bacterial infections ^[1] .			
IC₅₀ & Target	h-NTPDase-2 0.04 μM (IC ₅₀)	h-NTPDase-8 2.27 μM (IC ₅₀)	h-NTPDase-1 ∞100 μM (IC ₅₀)	h-NTPDase-3 ∞100 μM (IC ₅₀)

REFERENCES

[1]. Abbas S, et al. Synthesis, characterization and biological evaluation of thiadiazole amide derivatives as nucleoside triphosphate diphosphohydrolases (NTPDases) inhibitors. *Bioorg Chem.* 2022 Jan;118:105456.

Caution: Product has not been fully validated for medical applications. For research use only.

Tel: 609-228-6898

Fax: 609-228-5909

E-mail: tech@MedChemExpress.com

Address: 1 Deer Park Dr, Suite Q, Monmouth Junction, NJ 08852, USA