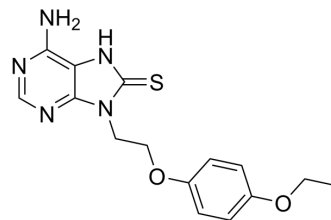


## NSD3-IN-3

Cat. No.:	HY-142095
CAS No.:	445416-12-6
Molecular Formula:	C <sub>15</sub> H <sub>17</sub> N <sub>5</sub> O <sub>2</sub> S
Molecular Weight:	331.39
Target:	Histone Methyltransferase
Pathway:	Epigenetics
Storage:	Please store the product under the recommended conditions in the Certificate of Analysis.



### BIOLOGICAL ACTIVITY

<b>Description</b>	NSD3-IN-3 is a potent NSD3 inhibitor with an IC <sub>50</sub> value of 1.86 μM. NSD3-IN-3 has anticancer activity and significantly inhibits the growth and proliferation of non-small cell lung cancer cell line H460 <sup>[1]</sup> .									
<b>IC<sub>50</sub> &amp; Target</b>	NSD3 1.86 μM (IC <sub>50</sub> )									
<b>In Vitro</b>	<p>NSD3-IN-3 (compound B2) (0-10 μM; 48 h) completely inhibits H3K36me3 modification in H460 and H1299 cells at 10 μM<sup>[1]</sup>. NSD3-IN-3 (0-20 μM; 48 h) inhibits cell growth of H460 cells<sup>[1]</sup>. MCE has not independently confirmed the accuracy of these methods. They are for reference only.</p> <p>Cell Viability Assay<sup>[1]</sup></p> <table border="1"> <tr> <td>Cell Line:</td> <td>Non-small cell lung cancer cell line H460</td> </tr> <tr> <td>Concentration:</td> <td>0, 2.5, 5, 10, and 20 μM</td> </tr> <tr> <td>Incubation Time:</td> <td>48 hours</td> </tr> <tr> <td>Result:</td> <td>Inhibited cell growth dose-dependently.</td> </tr> </table>		Cell Line:	Non-small cell lung cancer cell line H460	Concentration:	0, 2.5, 5, 10, and 20 μM	Incubation Time:	48 hours	Result:	Inhibited cell growth dose-dependently.
Cell Line:	Non-small cell lung cancer cell line H460									
Concentration:	0, 2.5, 5, 10, and 20 μM									
Incubation Time:	48 hours									
Result:	Inhibited cell growth dose-dependently.									

### REFERENCES

[1]. Kong Ren, et al. Application of compound B2 as histone methyltransferase NSD3 inhibitor: China, CN109223795[P].2019-01-18.

**Caution: Product has not been fully validated for medical applications. For research use only.**

Tel: 609-228-6898

Fax: 609-228-5909

E-mail: tech@MedChemExpress.com

Address: 1 Deer Park Dr, Suite Q, Monmouth Junction, NJ 08852, USA