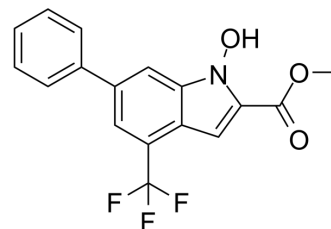


NHI-2

Cat. No.:	HY-124309		
CAS No.:	1269802-97-2		
Molecular Formula:	C ₁₇ H ₁₂ F ₃ NO ₃		
Molecular Weight:	335.28		
Target:	Lactate Dehydrogenase		
Pathway:	Metabolic Enzyme/Protease		
Storage:	Powder	-20°C	3 years
	In solvent	-80°C	6 months
		-20°C	1 month



SOLVENT & SOLUBILITY

In Vitro

DMSO : 25 mg/mL (74.56 mM; Need ultrasonic and warming)

Concentration	Solvent	Mass		
		1 mg	5 mg	10 mg
Preparing Stock Solutions	1 mM	2.9826 mL	14.9129 mL	29.8258 mL
	5 mM	0.5965 mL	2.9826 mL	5.9652 mL
	10 mM	0.2983 mL	1.4913 mL	2.9826 mL

Please refer to the solubility information to select the appropriate solvent.

BIOLOGICAL ACTIVITY

Description

NHI-2 is a potent inhibitor of LDH-A. NHI-2 is an efficient anti-glycolytic agent. NHI-2 has the potential for the research of cancer disease^[1].

REFERENCES

[1]. Granchi C, et al. Assessing the differential action on cancer cells of LDH-A inhibitors based on the N-hydroxyindole-2-carboxylate (NHI) and malonic (Mal) scaffolds. *Org Biomol Chem.* 2013;11(38):6588-6596.

Caution: Product has not been fully validated for medical applications. For research use only.

Tel: 609-228-6898

Fax: 609-228-5909

E-mail: tech@MedChemExpress.com

Address: 1 Deer Park Dr, Suite Q, Monmouth Junction, NJ 08852, USA