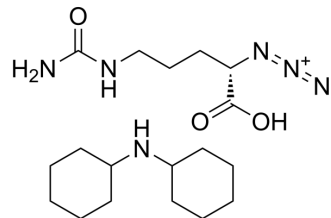


## N3-L-Cit-OH (DCHA)

Cat. No.:	HY-151709A
CAS No.:	2737202-65-0
Molecular Formula:	C <sub>18</sub> H <sub>34</sub> N <sub>6</sub> O <sub>3</sub>
Molecular Weight:	382.5
Target:	ADC Linker
Pathway:	Antibody-drug Conjugate/ADC Related
Storage:	Please store the product under the recommended conditions in the Certificate of Analysis.



### BIOLOGICAL ACTIVITY

#### Description

N3-L-Cit-OH DCHA is a click chemistry reagent containing an azide group. N3-L-Cit-OH DCHA can be used to construct peptidomimetic ADC linkers using Click-chemistry<sup>[1]</sup>.

### REFERENCES

[1]. Eigenbrot C, et al. Discovery of Peptidomimetic Antibody-Drug Conjugate Linkers with Enhanced Protease Specificity. *J Med Chem.* 2018 Feb 8;61(3):989-1000.

**Caution: Product has not been fully validated for medical applications. For research use only.**

Tel: 609-228-6898

Fax: 609-228-5909

E-mail: tech@MedChemExpress.com

Address: 1 Deer Park Dr, Suite Q, Monmouth Junction, NJ 08852, USA