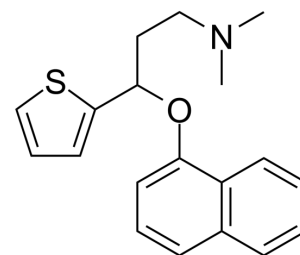


N-Methyl Duloxetine hydrochloride

Cat. No.:	HY-135412
CAS No.:	916135-70-1
Molecular Formula:	C ₁₉ H ₂₂ ClNOS
Molecular Weight:	347.9
Target:	Sodium Channel
Pathway:	Membrane Transporter/Ion Channel
Storage:	Please store the product under the recommended conditions in the Certificate of Analysis.



H-Cl

BIOLOGICAL ACTIVITY

Description

N-Methyl Duloxetine hydrochloride is an analgesic. N-Methyl Duloxetine (hydrochloride) elicits both tonic and use-dependent block of neuronal Na⁺ channels^[1].

REFERENCES

[1]. Wang CF, et al. R-Duloxetine and N-Methyl Duloxetine as Novel Analgesics Against Experimental Postincisional Pain. *Anesth Analg*. 2016 Mar;122(3):719-29.

Caution: Product has not been fully validated for medical applications. For research use only.

Tel: 609-228-6898

Fax: 609-228-5909

E-mail: tech@MedChemExpress.com

Address: 1 Deer Park Dr, Suite Q, Monmouth Junction, NJ 08852, USA