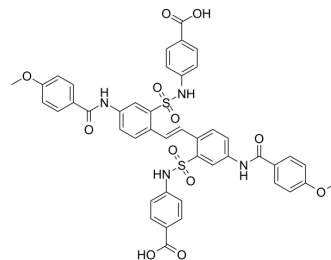


MtbHU-IN-1

Cat. No.:	HY-114439
CAS No.:	59736-84-4
Molecular Formula:	C ₄₄ H ₃₆ N ₄ O ₁₂ S ₂
Molecular Weight:	876.91
Target:	Bacterial
Pathway:	Anti-infection
Storage:	Please store the product under the recommended conditions in the Certificate of Analysis.



BIOLOGICAL ACTIVITY

Description	MtbHU-IN-1 is an inhibitor of Mycobacterium tuberculosis nucleoid-associated protein HU (MtbHU), with a K _d of 98 nM for binding to WT MtbHU.
IC ₅₀ & Target	Kd: 98 nM (WT MtbHU) ^[1] .
In Vitro	MtbHU-IN-1 (SD4) is an inhibitor of Mycobacterium tuberculosis nucleoid-associated protein HU (MtbHU), with K _d s of 98 nM, 760 nM, 980 nM, 340 nM and 730 nM for WT and mutant MtbHUs, respectively ^[1] . MCE has not independently confirmed the accuracy of these methods. They are for reference only.

REFERENCES

[1]. Bhowmick T, et al. Targeting Mycobacterium tuberculosis nucleoid-associated protein HU with structure-based inhibitors. Nat Commun. 2014 Jun 11;5:4124.

Caution: Product has not been fully validated for medical applications. For research use only.

Tel: 609-228-6898

Fax: 609-228-5909

E-mail: tech@MedChemExpress.com

Address: 1 Deer Park Dr, Suite Q, Monmouth Junction, NJ 08852, USA