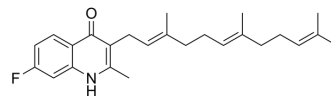


## Mtb-cyt-bd oxidase-IN-5

<b>Cat. No.:</b>	HY-151552
<b>Molecular Formula:</b>	C <sub>25</sub> H <sub>32</sub> FNO
<b>Molecular Weight:</b>	381.53
<b>Target:</b>	Bacterial
<b>Pathway:</b>	Anti-infection
<b>Storage:</b>	Please store the product under the recommended conditions in the Certificate of Analysis.



### BIOLOGICAL ACTIVITY

<b>Description</b>	Mtb-cyt-bd oxidase-IN-5 (compound 1k) is a Mycobacterium tuberculosis (Mtb) cytochrome bd (cyt-bd) oxidase (MtbCyt-bd Oxidase) inhibitor with an IC <sub>50</sub> value of 0.37 μM. Mtb-cyt-bd oxidase-IN-5 can effectively inhibit the growth of Mtb (MIC= 256 μM). Mtb-cyt-bd oxidase-IN-5 can be used in the study of tuberculosis <sup>[1]</sup> .								
<b>In Vitro</b>	<p>Mtb-cyt-bd oxidase-IN-5 (0-2048 μM; 7 days) inhibits growth of M. tuberculosis (MIC=256 μM)<sup>[1]</sup>. MCE has not independently confirmed the accuracy of these methods. They are for reference only.</p> <p>Cell Viability Assay<sup>[1]</sup></p> <table border="1"> <tr> <td>Cell Line:</td> <td>M. tuberculosis</td> </tr> <tr> <td>Concentration:</td> <td>0-2048 μM</td> </tr> <tr> <td>Incubation Time:</td> <td>7 days</td> </tr> <tr> <td>Result:</td> <td>Inhibited M. tuberculosis with a MIC value of 256 μM.</td> </tr> </table>	Cell Line:	M. tuberculosis	Concentration:	0-2048 μM	Incubation Time:	7 days	Result:	Inhibited M. tuberculosis with a MIC value of 256 μM.
Cell Line:	M. tuberculosis								
Concentration:	0-2048 μM								
Incubation Time:	7 days								
Result:	Inhibited M. tuberculosis with a MIC value of 256 μM.								

### REFERENCES

[1]. Lawer A, et al. Synthesis and Biological Evaluation of Aurachin D Analogues as Inhibitors of Mycobacterium tuberculosis Cytochrome bd Oxidase. ACS Med Chem Lett. 2022 Sep 26;13(10):1663-1669.

---

**Caution: Product has not been fully validated for medical applications. For research use only.**

Tel: 609-228-6898

Fax: 609-228-5909

E-mail: [tech@MedChemExpress.com](mailto:tech@MedChemExpress.com)

Address: 1 Deer Park Dr, Suite Q, Monmouth Junction, NJ 08852, USA