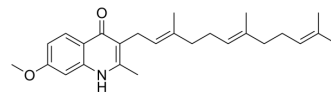


## Mtb-cyt-bd oxidase-IN-1

Cat. No.:	HY-151548
Molecular Formula:	C <sub>26</sub> H <sub>35</sub> NO <sub>2</sub>
Molecular Weight:	393.56
Target:	Bacterial
Pathway:	Anti-infection
Storage:	Please store the product under the recommended conditions in the Certificate of Analysis.



### BIOLOGICAL ACTIVITY

Description	Mtb-cyt-bd oxidase-IN-1 (compound 1x) is a Mycobacterium tuberculosis cytochrome bd oxidase (Mtb cyt-bd oxidase) inhibitor with an IC <sub>50</sub> value of 0.13 μM. Mtb-cyt-bd oxidase-IN-1 can be used in tuberculosis research <sup>[1]</sup> .
In Vitro	Mtb-cyt-bd oxidase-IN-1 inhibits the growth of Mycobacterium tuberculosis and Mycobacterium smegmatis with MICs of >512 μM <sup>[1]</sup> . MCE has not independently confirmed the accuracy of these methods. They are for reference only.

### REFERENCES

[1]. Lawer A, et al. Synthesis and Biological Evaluation of Aurachin D Analogues as Inhibitors of Mycobacterium tuberculosis Cytochrome bd Oxidase. ACS Med Chem Lett. 2022 Sep 26;13(10):1663-1669.

---

**Caution: Product has not been fully validated for medical applications. For research use only.**

Tel: 609-228-6898

Fax: 609-228-5909

E-mail: [tech@MedChemExpress.com](mailto:tech@MedChemExpress.com)

Address: 1 Deer Park Dr, Suite Q, Monmouth Junction, NJ 08852, USA