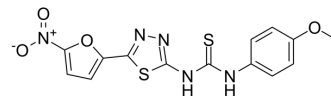


Mt KARI-IN-2

Cat. No.:	HY-146299
CAS No.:	2413974-52-2
Molecular Formula:	C ₁₄ H ₁₁ N ₅ O ₄ S ₂
Molecular Weight:	377.4
Target:	Bacterial
Pathway:	Anti-infection
Storage:	Please store the product under the recommended conditions in the Certificate of Analysis.



BIOLOGICAL ACTIVITY

Description	Mt KARI-IN-2 (compound 5b) is a potent <i>Mycobacterium tuberculosis</i> ketol-acid reductoisomerase (<i>Mtb</i> KARI) inhibitor with a K_i value of 2.02 μ M. Mt KARI-IN-2 has inhibitory activity against Mtb H37Rv (MIC = 0.78 μ M) and low cytotoxicity (HEK IC ₅₀ > 86 μ g/mL) ^[1] .
IC ₅₀ & Target	K_i : 2.02 μ M (Mtb KARI) ^[1]

REFERENCES

[1]. Krishna VS, et al. Design and development of ((4-methoxyphenyl)carbonyl) (5-(5-nitrothiophen-2-yl)-1,3,4-thiadiazol-2-yl)amide analogues as Mycobacterium tuberculosis ketol-acid reductoisomerase inhibitors. Eur J Med Chem. 2020;193:112178.

Caution: Product has not been fully validated for medical applications. For research use only.

Tel: 609-228-6898

Fax: 609-228-5909

E-mail: tech@MedChemExpress.com

Address: 1 Deer Park Dr, Suite Q, Monmouth Junction, NJ 08852, USA