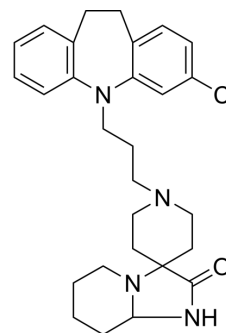


Mosapramine

Cat. No.:	HY-106584
CAS No.:	89419-40-9
Molecular Formula:	C ₂₈ H ₃₅ ClN ₄ O
Molecular Weight:	479.06
Target:	Dopamine Receptor
Pathway:	GPCR/G Protein; Neuronal Signaling
Storage:	Please store the product under the recommended conditions in the Certificate of Analysis.



BIOLOGICAL ACTIVITY

Description

Mosapramine (Clospipramine) is an orally active and potent dopamine receptor antagonist with high affinity to dopamine receptor subtypes 2, 3 and 4, and with moderate affinity for the 5-HT₂ receptor. Mosapramine shows antipsychotic activity and can be used in schizophrenia research^{[1][2]}.

REFERENCES

- [1]. Takahashi N, et al. Comparison of risperidone and mosapramine addition to neuroleptic treatment in chronic schizophrenia. *Neuropsychobiology*. 1999;39(2):81-5.
- [2]. Jun Ishigooka, et al. Pilot study of plasma concentrations of mosapramine, a new iminodibenzyl antipsychotic agent, after multiple oral administration in schizophrenic patients. *Current Therapeutic Research*, Volume 55, Issue 3, March 1994, Pages 331-342.

Caution: Product has not been fully validated for medical applications. For research use only.

Tel: 609-228-6898

Fax: 609-228-5909

E-mail: tech@MedChemExpress.com

Address: 1 Deer Park Dr, Suite Q, Monmouth Junction, NJ 08852, USA