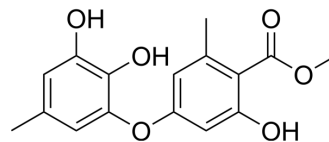


Methyl gerfelin

Cat. No.:	HY-124824
CAS No.:	700870-56-0
Molecular Formula:	C ₁₆ H ₁₆ O ₆
Molecular Weight:	304.29
Target:	Glyoxalase (GLO)
Pathway:	Metabolic Enzyme/Protease
Storage:	Please store the product under the recommended conditions in the Certificate of Analysis.



BIOLOGICAL ACTIVITY

Description	Methyl gerfelin inhibits osteoclast differentiation by binding 3 major cellular proteins: glyoxalase 1 (GLO1), sterol binding protein 2 (SCP2), and small glutamine-rich tetratricopeptide repeat containing protein A (SGTA). Methyl gerfelin is a potent GLO1 inhibitor related to the flavonoid class ^{[1][2]} .
IC₅₀ & Target	Glyoxalase 1 (GLO1), Sterol binding protein 2 (SCP2), Small glutamine-rich tetratricopeptide repeat containing protein A (SGTA) ^[1]
In Vitro	Methyl gerfelin (0-30 μM; 72 h) suppresses osteoclastogenesis with an IC ₅₀ value of 2.8 μM without affecting the survival and function of mature osteoclasts at the effective concentration ^[1] . MCE has not independently confirmed the accuracy of these methods. They are for reference only.

REFERENCES

- [1]. Kanoh N, et al. Dual structure-activity relationship of osteoclastogenesis inhibitor methyl gerfelin based on TEG scanning. *Bioconjug Chem.* 2013 Jan 16;24(1):44-52.
- [2]. Perez C, et al. Metal-Binding Pharmacophore Library Yields the Discovery of a Glyoxalase 1 Inhibitor. *J Med Chem.* 2019 Feb 14;62(3):1609-1625.

Caution: Product has not been fully validated for medical applications. For research use only.

Tel: 609-228-6898

Fax: 609-228-5909

E-mail: tech@MedChemExpress.com

Address: 1 Deer Park Dr, Suite Q, Monmouth Junction, NJ 08852, USA