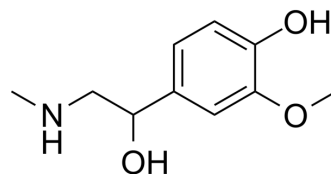


Metanephrine

Cat. No.:	HY-113299		
CAS No.:	5001-33-2		
Molecular Formula:	C ₁₀ H ₁₅ NO ₃		
Molecular Weight:	197.23		
Target:	Endogenous Metabolite		
Pathway:	Metabolic Enzyme/Protease		
Storage:	Powder	-20°C	3 years
	In solvent	-80°C	6 months
		-20°C	1 month



SOLVENT & SOLUBILITY

In Vitro

DMSO : 125 mg/mL (633.78 mM; Need ultrasonic)

Concentration	Solvent	Mass		
		1 mg	5 mg	10 mg
1 mM		5.0702 mL	25.3511 mL	50.7022 mL
5 mM		1.0140 mL	5.0702 mL	10.1404 mL
10 mM		0.5070 mL	2.5351 mL	5.0702 mL

Please refer to the solubility information to select the appropriate solvent.

BIOLOGICAL ACTIVITY

Description	Metanephrine is the O-methylated metabolite of epinephrine that can be used for the research of diagnosis of pheochromocytoma ^[1] .
IC₅₀ & Target	Human Endogenous Metabolite
In Vitro	Metanephrine inhibits MPP ⁺ uptake into Caki-1 cells and rat hepatocytes with IC ₅₀ s of 34.2 μM and 302.0 μM, respectively ^[2] . MCE has not independently confirmed the accuracy of these methods. They are for reference only.

REFERENCES

[1]. Eisenhofer G, et al. Measurements of plasma methoxytyramine, normetanephrine, and metanephrine as discriminators of different hereditary forms of pheochromocytoma. Clin Chem. 2011 Mar;57(3):411-20.

[2]. Martel F, et al. Comparison between uptake2 and rOCT1: effects of catecholamines, metanephrines and corticosterone. Naunyn Schmiedebergs Arch Pharmacol. 1999 Apr;359(4):303-9.

Caution: Product has not been fully validated for medical applications. For research use only.

Tel: 609-228-6898

Fax: 609-228-5909

E-mail: tech@MedChemExpress.com

Address: 1 Deer Park Dr, Suite Q, Monmouth Junction, NJ 08852, USA