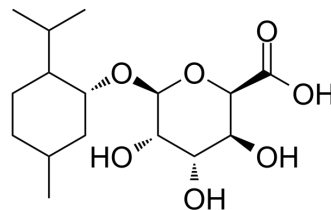


## Menthol glucuronide

Cat. No.:	HY-122317
CAS No.:	79466-08-3
Molecular Formula:	C <sub>16</sub> H <sub>28</sub> O <sub>7</sub>
Molecular Weight:	332.39
Target:	Drug Metabolite
Pathway:	Metabolic Enzyme/Protease
Storage:	Please store the product under the recommended conditions in the Certificate of Analysis.



### BIOLOGICAL ACTIVITY

<b>Description</b>	Menthol glucuronide, a metabolite of Menthol (HY-N1369), is a plasma and urine biomarker of acute Menthol inhalation <sup>[1][2]</sup> .
<b>In Vitro</b>	Menthol, a monoterpene, is a principal component of peppermint oil and is used extensively in consumer products as a flavoring aid. Menthol has a half-life of 3-6 h and is rapidly metabolized to menthol glucuronide which is detectable in urine and serum following menthol use <sup>[2]</sup> . MCE has not independently confirmed the accuracy of these methods. They are for reference only.

### REFERENCES

- [1]. Peter Jatlow, et al. Plasma Menthol Glucuronide as a Biomarker of Acute Menthol Inhalation. *Tob Regul Sci*. 2018 Jan; 4(1): 586-591.
- [2]. Judy Peat, et al. Determination of Menthol in Plasma and Urine by Gas Chromatography/Mass Spectrometry (GC/MS). *Methods Mol Biol*. 2016;1383:205-11.

**Caution: Product has not been fully validated for medical applications. For research use only.**

Tel: 609-228-6898

Fax: 609-228-5909

E-mail: [tech@MedChemExpress.com](mailto:tech@MedChemExpress.com)

Address: 1 Deer Park Dr, Suite Q, Monmouth Junction, NJ 08852, USA