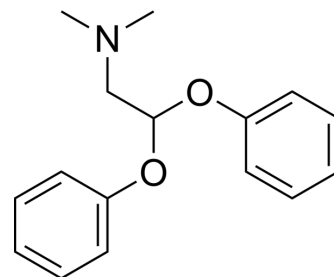


Medifoxamine

Cat. No.:	HY-119468	
CAS No.:	32359-34-5	
Molecular Formula:	C ₁₆ H ₁₉ NO ₂	
Molecular Weight:	257.33	
Target:	Dopamine Receptor	
Pathway:	GPCR/G Protein; Neuronal Signaling	
Storage:	Powder	-20°C 3 years 4°C 2 years
	In solvent	-80°C 6 months -20°C 1 month



SOLVENT & SOLUBILITY

In Vitro

DMSO : 100 mg/mL (388.61 mM; Need ultrasonic)

Concentration	Solvent	Mass		
		1 mg	5 mg	10 mg
Preparing Stock Solutions	1 mM	3.8861 mL	19.4303 mL	38.8606 mL
	5 mM	0.7772 mL	3.8861 mL	7.7721 mL
	10 mM	0.3886 mL	1.9430 mL	3.8861 mL

Please refer to the solubility information to select the appropriate solvent.

In Vivo

- Add each solvent one by one: 10% DMSO >> 40% PEG300 >> 5% Tween-80 >> 45% saline
Solubility: ≥ 2.5 mg/mL (9.72 mM); Clear solution
- Add each solvent one by one: 10% DMSO >> 90% (20% SBE-β-CD in saline)
Solubility: ≥ 2.5 mg/mL (9.72 mM); Clear solution
- Add each solvent one by one: 10% DMSO >> 90% corn oil
Solubility: ≥ 2.5 mg/mL (9.72 mM); Clear solution

BIOLOGICAL ACTIVITY

Description

Medifoxamine is a monoamine re-uptake inhibiting antidepressive agent which preferentially inhibits dopamine reuptake^[1].

REFERENCES

[1]. Saleh S, et al. Ocular hypotensive effects of medifoxamine. Br J Clin Pharmacol. 1992;34(3):269-271.

Caution: Product has not been fully validated for medical applications. For research use only.

Tel: 609-228-6898

Fax: 609-228-5909

E-mail: tech@MedChemExpress.com

Address: 1 Deer Park Dr, Suite Q, Monmouth Junction, NJ 08852, USA