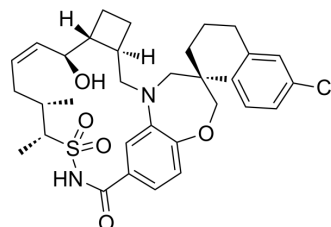


Mcl-1 inhibitor 9

Cat. No.:	HY-148203
CAS No.:	1883727-31-8
Molecular Formula:	C ₃₂ H ₃₉ ClN ₂ O ₅ S
Molecular Weight:	599.18
Target:	Bcl-2 Family
Pathway:	Apoptosis
Storage:	Please store the product under the recommended conditions in the Certificate of Analysis.



BIOLOGICAL ACTIVITY

Description	Mcl-1 inhibitor 9 (example 2) is a myeloid cell leukemia 1 (Mcl-1) inhibitor with IC ₅₀ value of 0.21889 nM. Mcl-1 inhibitor 9 shows anti-tumor activity ^[1] .								
In Vitro	<p>Mcl-1 inhibitor 9 (0-22.2 μM; 16 h) inhibits the growth of human multiple myeloma cells^[1]. MCE has not independently confirmed the accuracy of these methods. They are for reference only. Cell Viability Assay^[1]</p> <table border="1"> <tr> <td>Cell Line:</td> <td>OPM-2 cells</td> </tr> <tr> <td>Concentration:</td> <td>0-22.2 μM</td> </tr> <tr> <td>Incubation Time:</td> <td>16 hours</td> </tr> <tr> <td>Result:</td> <td>Showed IC₅₀ value of 104.69 nM.</td> </tr> </table>	Cell Line:	OPM-2 cells	Concentration:	0-22.2 μM	Incubation Time:	16 hours	Result:	Showed IC ₅₀ value of 104.69 nM.
Cell Line:	OPM-2 cells								
Concentration:	0-22.2 μM								
Incubation Time:	16 hours								
Result:	Showed IC ₅₀ value of 104.69 nM.								

REFERENCES

[1]. Sean P. Brown, et al. Tetrahydronaphthalene derivatives that inhibit mcl-1 protein. WO2016033486A1.

Caution: Product has not been fully validated for medical applications. For research use only.

Tel: 609-228-6898

Fax: 609-228-5909

E-mail: tech@MedChemExpress.com

Address: 1 Deer Park Dr, Suite Q, Monmouth Junction, NJ 08852, USA