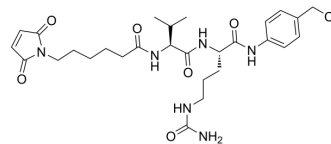


Mc-Val-Cit-PAB-Cl

Cat. No.:	HY-112099
CAS No.:	1639351-92-0
Molecular Formula:	C ₂₈ H ₃₉ ClN ₆ O ₆
Molecular Weight:	591.1
Target:	ADC Linker
Pathway:	Antibody-drug Conjugate/ADC Related
Storage:	-20°C, stored under nitrogen * In solvent : -80°C, 6 months; -20°C, 1 month (stored under nitrogen)



BIOLOGICAL ACTIVITY

Description	Mc-Val-Cit-PAB-Cl is a cleavable ADC linker. Mc-Val-Cit-PAB-Cl can be used to conjugate MMAE and antibody to form antibody-MC-vc-MMAE (e.g., anti-CD22-MC-VC-PABC-MMAE with IC ₅₀ s of 3.3 and 0.95 nM for BJAB and WSU cell lines in cytotoxicity assay).	
IC₅₀ & Target	Protease Cleavable	Cleavable

REFERENCES

[1]. Staben LR, et al. Stabilizing a Tubulysin Antibody-Drug Conjugate To Enable Activity Against Multidrug-Resistant Tumors. ACS Med Chem Lett. 2017 Sep 5;8(10):1037-1041.

Caution: Product has not been fully validated for medical applications. For research use only.

Tel: 609-228-6898

Fax: 609-228-5909

E-mail: tech@MedChemExpress.com

Address: 1 Deer Park Dr, Suite Q, Monmouth Junction, NJ 08852, USA