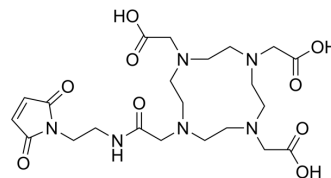


Maleimide-DOTA

Cat. No.:	HY-133540
CAS No.:	1006711-90-5
Molecular Formula:	C ₂₂ H ₃₄ N ₆ O ₉
Molecular Weight:	526.54
Target:	ADC Linker
Pathway:	Antibody-drug Conjugate/ADC Related
Storage:	-20°C, sealed storage, away from moisture and light * In solvent : -80°C, 6 months; -20°C, 1 month (sealed storage, away from moisture and light)



SOLVENT & SOLUBILITY

In Vitro

H₂O : 100 mg/mL (189.92 mM; Need ultrasonic)
DMSO : 100 mg/mL (189.92 mM; ultrasonic and warming and heat to 60°C)

Preparing Stock Solutions	Solvent		Mass		
	Concentration		1 mg	5 mg	10 mg
	1 mM		1.8992 mL	9.4960 mL	18.9919 mL
	5 mM		0.3798 mL	1.8992 mL	3.7984 mL
	10 mM		0.1899 mL	0.9496 mL	1.8992 mL

Please refer to the solubility information to select the appropriate solvent.

In Vivo

- Add each solvent one by one: PBS
Solubility: 100 mg/mL (189.92 mM); Clear solution; Need ultrasonic
- Add each solvent one by one: 10% DMSO >> 40% PEG300 >> 5% Tween-80 >> 45% saline
Solubility: ≥ 1.25 mg/mL (2.37 mM); Clear solution
- Add each solvent one by one: 10% DMSO >> 90% (20% SBE-β-CD in saline)
Solubility: ≥ 1.25 mg/mL (2.37 mM); Clear solution
- Add each solvent one by one: 10% DMSO >> 90% corn oil
Solubility: ≥ 1.25 mg/mL (2.37 mM); Clear solution

BIOLOGICAL ACTIVITY

Description	Maleimide-DOTA is a non-cleavable ADC linker used in the synthesis of antibody-drug conjugates (ADCs).
IC₅₀ & Target	Non-cleavable
In Vitro	ADCs are comprised of an antibody to which is attached an ADC cytotoxin through an ADC linker.

MCE has not independently confirmed the accuracy of these methods. They are for reference only.

CUSTOMER VALIDATION

- ACS Omega. August 5, 2022.

See more customer validations on www.MedChemExpress.com

Caution: Product has not been fully validated for medical applications. For research use only.

Tel: 609-228-6898

Fax: 609-228-5909

E-mail: tech@MedChemExpress.com

Address: 1 Deer Park Dr, Suite Q, Monmouth Junction, NJ 08852, USA