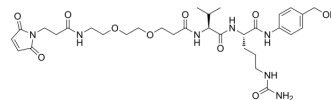


## Mal-amido-PEG2-Val-Cit-PAB-OH

Cat. No.:	HY-140146
Molecular Formula:	C <sub>32</sub> H <sub>47</sub> N <sub>7</sub> O <sub>10</sub>
Molecular Weight:	689.76
Target:	ADC Linker
Pathway:	Antibody-drug Conjugate/ADC Related
Storage:	Please store the product under the recommended conditions in the Certificate of Analysis.



### BIOLOGICAL ACTIVITY

<b>Description</b>	Mal-amido-PEG2-Val-Cit-PAB-OH is a cleavable 2 unit PEG ADC linker used in the synthesis of antibody-drug conjugates (ADCs) <sup>[1]</sup> .	
<b>IC<sub>50</sub> &amp; Target</b>	Protease Cleavable	Cleavable
<b>In Vitro</b>	ADCs are comprised of an antibody to which is attached an ADC cytotoxin through an ADC linker <sup>[1]</sup> . MCE has not independently confirmed the accuracy of these methods. They are for reference only.	

### REFERENCES

[1]. Beck A, et al. Strategies and challenges for the next generation of antibody-drug conjugates. Nat Rev Drug Discov. 2017 May;16(5):315-337.

**Caution: Product has not been fully validated for medical applications. For research use only.**

Tel: 609-228-6898

Fax: 609-228-5909

E-mail: tech@MedChemExpress.com

Address: 1 Deer Park Dr, Suite Q, Monmouth Junction, NJ 08852, USA