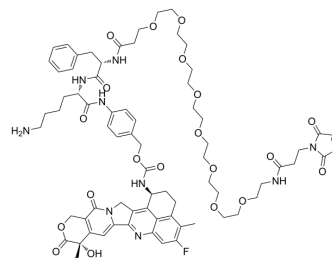


Mal-PEG8-Phe-Lys-PAB-Exatecan

Cat. No.:	HY-148380
CAS No.:	2679821-44-2
Molecular Formula:	C ₇₃ H ₉₂ FN ₉ O ₂₀
Molecular Weight:	1434.56
Target:	Drug-Linker Conjugates for ADC
Pathway:	Antibody-drug Conjugate/ADC Related
Storage:	Please store the product under the recommended conditions in the Certificate of Analysis.



SOLVENT & SOLUBILITY

In Vitro	DMSO : 180 mg/mL (125.47 mM; Need ultrasonic)					
	Preparing Stock Solutions	Solvent Concentration	Mass	1 mg	5 mg	10 mg
		1 mM		0.6971 mL	3.4854 mL	6.9708 mL
		5 mM		0.1394 mL	0.6971 mL	1.3942 mL
		10 mM		0.0697 mL	0.3485 mL	0.6971 mL
Please refer to the solubility information to select the appropriate solvent.						
In Vivo	1. Add each solvent one by one: 10% DMSO >> 40% PEG300 >> 5% Tween-80 >> 45% saline Solubility: 4.5 mg/mL (3.14 mM); Suspended solution; Need ultrasonic					
	2. Add each solvent one by one: 10% DMSO >> 90% (20% SBE-β-CD in saline) Solubility: 4.5 mg/mL (3.14 mM); Suspended solution; Need ultrasonic					
	3. Add each solvent one by one: 10% DMSO >> 90% corn oil Solubility: ≥ 4.5 mg/mL (3.14 mM); Clear solution					

BIOLOGICAL ACTIVITY

Description	Mal-PEG8-Phe-Lys-PAB-Exatecan (compound 15) is a agent-linker conjugate for ADC, composed of degradable linker Mal-PEG8-Phe-Lys-PAB and toxin molecule Exatecan (HY-13631) composition ^[1] .
--------------------	---

REFERENCES

[1]. Manel KRAIEM. Treatment of cancer. Patent WO2021151984A1.

Caution: Product has not been fully validated for medical applications. For research use only.

Tel: 609-228-6898

Fax: 609-228-5909

E-mail: tech@MedChemExpress.com

Address: 1 Deer Park Dr, Suite Q, Monmouth Junction, NJ 08852, USA