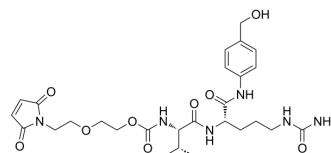


## Mal-PEG2-Val-Cit-PABA

<b>Cat. No.:</b>	HY-145489		
<b>CAS No.:</b>	1662687-83-3		
<b>Molecular Formula:</b>	C <sub>27</sub> H <sub>38</sub> N <sub>6</sub> O <sub>9</sub>		
<b>Molecular Weight:</b>	590.63		
<b>Target:</b>	ADC Linker		
<b>Pathway:</b>	Antibody-drug Conjugate/ADC Related		
<b>Storage:</b>	Powder	-20°C	3 years
	In solvent	-80°C	6 months
		-20°C	1 month



### BIOLOGICAL ACTIVITY

<b>Description</b>	Mal-PEG2-Val-Cit-PABA is a cleavable ADC linker used in the synthesis of antibody-drug conjugates (ADCs) <sup>[1]</sup> .	
<b>IC<sub>50</sub> &amp; Target</b>	Protease Cleavable	Cleavable
<b>In Vitro</b>	ADCs are comprised of an antibody to which is attached an ADC cytotoxin through an ADC linker <sup>[1]</sup> . MCE has not independently confirmed the accuracy of these methods. They are for reference only.	

### REFERENCES

[1]. Beck A, et al. Strategies and challenges for the next generation of antibody-drug conjugates. Nat Rev Drug Discov. 2017;16(5):315-337.

**Caution: Product has not been fully validated for medical applications. For research use only.**

Tel: 609-228-6898

Fax: 609-228-5909

E-mail: tech@MedChemExpress.com

Address: 1 Deer Park Dr, Suite Q, Monmouth Junction, NJ 08852, USA