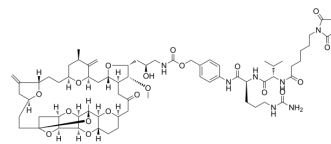


## Mal-(CH<sub>2</sub>)<sub>5</sub>-Val-Cit-PAB-Eribulin

<b>Cat. No.:</b>	HY-139642
<b>CAS No.:</b>	2130869-21-3
<b>Molecular Formula:</b>	C <sub>69</sub> H <sub>97</sub> N <sub>7</sub> O <sub>19</sub>
<b>Molecular Weight:</b>	1328.54
<b>Target:</b>	Drug-Linker Conjugates for ADC
<b>Pathway:</b>	Antibody-drug Conjugate/ADC Related
<b>Storage:</b>	4°C, protect from light, stored under nitrogen * In solvent : -80°C, 6 months; -20°C, 1 month (protect from light, stored under nitrogen)



### SOLVENT & SOLUBILITY

#### In Vitro

DMSO : 100 mg/mL (75.27 mM; Need ultrasonic)

Preparing Stock Solutions	Solvent Concentration	Mass		
		1 mg	5 mg	10 mg
	1 mM	0.7527 mL	3.7635 mL	7.5271 mL
	5 mM	0.1505 mL	0.7527 mL	1.5054 mL
	10 mM	0.0753 mL	0.3764 mL	0.7527 mL

Please refer to the solubility information to select the appropriate solvent.

### BIOLOGICAL ACTIVITY

#### Description

Mal-(CH<sub>2</sub>)<sub>5</sub>-Val-Cit-PAB-Eribulin is a agent-linker conjugate for ADC with potent antitumor activity by using the anti-microtubule agent, Eribulin, linked via linker Mal-(CH<sub>2</sub>)<sub>5</sub>-Val-Cit-PAB<sup>[1]</sup>.

#### In Vitro

Eribulin (E7389) is a microtubule targeting agent that is used for the research of metastatic breast cancer. Eribulin inhibits the proliferation of cancer cells by binding microtubule proteins and microtubules<sup>[2]</sup>.

MCE has not independently confirmed the accuracy of these methods. They are for reference only.

### REFERENCES

[1]. Earl F Albone, et al. Eribulin-based antibody-drug conjugates and methods of use. Patent US20170252458A1.

[2]. Watanabe K, et, al. Low-dose eribulin reduces lung metastasis of osteosarcoma in vitro and in vivo. Oncotarget. 2019 Jan 4; 10(2): 161-174.

---

**Caution: Product has not been fully validated for medical applications. For research use only.**

Tel: 609-228-6898

Fax: 609-228-5909

E-mail: [tech@MedChemExpress.com](mailto:tech@MedChemExpress.com)

Address: 1 Deer Park Dr, Suite Q, Monmouth Junction, NJ 08852, USA