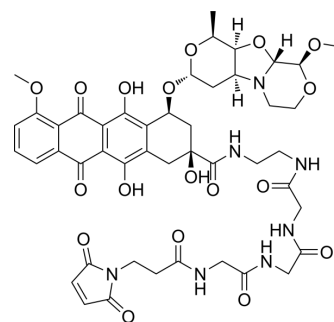


## Mal-C2-Gly3-EDA-PNU-159682

Cat. No.:	HY-126688
CAS No.:	2259318-53-9
Molecular Formula:	C <sub>46</sub> H <sub>53</sub> N <sub>7</sub> O <sub>18</sub>
Molecular Weight:	991.95
Target:	Drug-Linker Conjugates for ADC
Pathway:	Antibody-drug Conjugate/ADC Related
Storage:	Please store the product under the recommended conditions in the Certificate of Analysis.



### BIOLOGICAL ACTIVITY

#### Description

Mal-C2-Gly3-EDA-PNU-159682, a agent-linker conjugate for ADC, consists a cleavable ADC linker Mal-C2-Gly3-EDA and a potent ADC cytotoxin PNU-159682.

**Caution: Product has not been fully validated for medical applications. For research use only.**

Tel: 609-228-6898

Fax: 609-228-5909

E-mail: [tech@MedChemExpress.com](mailto:tech@MedChemExpress.com)

Address: 1 Deer Park Dr, Suite Q, Monmouth Junction, NJ 08852, USA