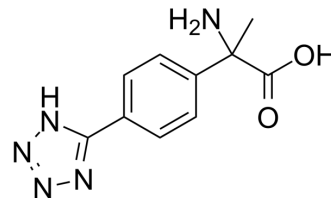


## MTPG

Cat. No.:	HY-101247
CAS No.:	169209-66-9
Molecular Formula:	C <sub>10</sub> H <sub>11</sub> N <sub>5</sub> O <sub>2</sub>
Molecular Weight:	233.23
Target:	mGluR
Pathway:	GPCR/G Protein; Neuronal Signaling
Storage:	Please store the product under the recommended conditions in the Certificate of Analysis.



## BIOLOGICAL ACTIVITY

Description	MTPG is a potent mGluR2 and mGluR3 antagonist. MTPG can block the induction of brain ischemic tolerance induced by cerebral ischemic preconditioning. MTPG also significantly attenuates the inhibitory effect of L-CCG-1 on the KCl-evoked dopamine release <sup>[1]</sup> .
IC <sub>50</sub> & Target	mGluR2, mGluR 3 <sup>[1]</sup>

## REFERENCES

[1]. Chaki S, et al. Group II metabotropic glutamate receptor-mediated regulation of dopamine release from slices of rat nucleus accumbens. *Neurosci Lett.* 2006;404(1-2):182-186.

[2]. Feng RF, Li WB, Liu HQ, et al. *Sheng Li Xue Bao.* 2003;55(3):303-310.

**Caution: Product has not been fully validated for medical applications. For research use only.**

Tel: 609-228-6898

Fax: 609-228-5909

E-mail: tech@MedChemExpress.com

Address: 1 Deer Park Dr, Suite Q, Monmouth Junction, NJ 08852, USA