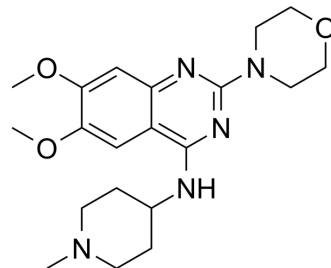


MS0124

Cat. No.:	HY-120444
CAS No.:	1197196-63-6
Molecular Formula:	C ₂₀ H ₂₉ N ₅ O ₃
Molecular Weight:	387.48
Target:	Histone Methyltransferase
Pathway:	Epigenetics
Storage:	Please store the product under the recommended conditions in the Certificate of Analysis.



BIOLOGICAL ACTIVITY

Description

MS0124 is a potent selective G9a-like protein (GLP) inhibitor with IC₅₀ values of 13±4 nM and 440±63 nM for GLP and G9a, respectively^[1].

REFERENCES

[1]. Yan Xiong, et al. Structure-activity relationship studies of G9a-like protein (GLP) inhibitors. Bioorg Med Chem

Caution: Product has not been fully validated for medical applications. For research use only.

Tel: 609-228-6898

Fax: 609-228-5909

E-mail: tech@MedChemExpress.com

Address: 1 Deer Park Dr, Suite Q, Monmouth Junction, NJ 08852, USA