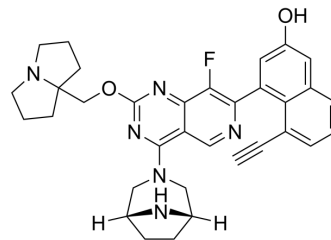


MRTX-EX185

Cat. No.:	HY-145962
Molecular Formula:	C ₃₃ H ₃₃ FN ₆ O ₂
Molecular Weight:	564.65
Target:	Ras
Pathway:	GPCR/G Protein
Storage:	Please store the product under the recommended conditions in the Certificate of Analysis.



BIOLOGICAL ACTIVITY

Description

MRTX-EX185 is a potent inhibitor of GDP-loaded KRAS and KRAS(G12D), with an IC₅₀ of 90 nM for KRAS(G12D). MRTX-EX185 also binds GDP-loaded HRAS^[1]. MRTX-EX185 is a click chemistry reagent, it contains an Alkyne group and can undergo copper-catalyzed azide-alkyne cycloaddition (CuAAC) with molecules containing Azide groups.

REFERENCES

[1]. Vasta JD, et, al. KRAS is vulnerable to reversible switch-II pocket engagement in cells. Nat Chem Biol. 2022 Mar 21.

Caution: Product has not been fully validated for medical applications. For research use only.

Tel: 609-228-6898

Fax: 609-228-5909

E-mail: tech@MedChemExpress.com

Address: 1 Deer Park Dr, Suite Q, Monmouth Junction, NJ 08852, USA