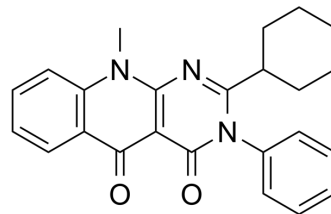


MLS1082

Cat. No.:	HY-123837
CAS No.:	883958-36-9
Molecular Formula:	C ₂₄ H ₂₃ N ₃ O ₂
Molecular Weight:	385.46
Target:	Dopamine Receptor
Pathway:	GPCR/G Protein; Neuronal Signaling
Storage:	Please store the product under the recommended conditions in the Certificate of Analysis.



BIOLOGICAL ACTIVITY

Description	MLS1082 is a pyrimidone-based D1-like dopamine receptor positive allosteric modulator, with an EC ₅₀ of 123 nM for DA-stimulated G protein signaling ^[1] .
In Vitro	MLS1082 potentiate β-Arrestin- and G protein-Mediated D1R signaling ^[1] . MCE has not independently confirmed the accuracy of these methods. They are for reference only.

REFERENCES

- [1]. Kathryn D Luderman, et al. Development of pyrimidone D1 dopamine receptor positive allosteric modulators. *Bioorg Med Chem Lett*. 2021 Jan 1;31:127696.
- [2]. Kathryn D Luderman, et al. Identification of Positive Allosteric Modulators of the D 1 Dopamine Receptor That Act at Diverse Binding Sites. *Mol Pharmacol*. 2018 Oct;94(4):1197-1209.

Caution: Product has not been fully validated for medical applications. For research use only.

Tel: 609-228-6898

Fax: 609-228-5909

E-mail: tech@MedChemExpress.com

Address: 1 Deer Park Dr, Suite Q, Monmouth Junction, NJ 08852, USA