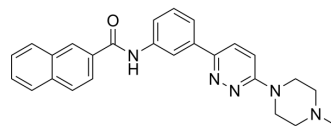


## MLKL-IN-2

Cat. No.:	HY-141889		
CAS No.:	899759-16-1		
Molecular Formula:	C <sub>26</sub> H <sub>25</sub> N <sub>5</sub> O		
Molecular Weight:	423.51		
Target:	Mixed Lineage Kinase		
Pathway:	MAPK/ERK Pathway		
Storage:	Powder	-20°C	3 years
		4°C	2 years
	In solvent	-80°C	6 months
		-20°C	1 month



### SOLVENT & SOLUBILITY

#### In Vitro

DMSO : 10 mg/mL (23.61 mM; ultrasonic and warming and heat to 60°C)

Concentration	Solvent	Mass		
		1 mg	5 mg	10 mg
Preparing Stock Solutions	1 mM	2.3612 mL	11.8061 mL	23.6122 mL
	5 mM	0.4722 mL	2.3612 mL	4.7224 mL
	10 mM	0.2361 mL	1.1806 mL	2.3612 mL

Please refer to the solubility information to select the appropriate solvent.

#### In Vivo

- Add each solvent one by one: 10% DMSO >> 40% PEG300 >> 5% Tween-80 >> 45% saline  
Solubility: ≥ 1 mg/mL (2.36 mM); Clear solution
- Add each solvent one by one: 10% DMSO >> 90% (20% SBE-β-CD in saline)  
Solubility: ≥ 1 mg/mL (2.36 mM); Clear solution
- Add each solvent one by one: 10% DMSO >> 90% corn oil  
Solubility: ≥ 1 mg/mL (2.36 mM); Clear solution

### BIOLOGICAL ACTIVITY

#### Description

MLKL-IN-2 is a MLKL inhibitor extracted from patent WO2021224505A1, compound (i)<sup>[1]</sup>.

#### IC<sub>50</sub> & Target

MLKL<sup>[1]</sup>

### REFERENCES

**Caution: Product has not been fully validated for medical applications. For research use only.**

Tel: 609-228-6898

Fax: 609-228-5909

E-mail: [tech@MedChemExpress.com](mailto:tech@MedChemExpress.com)

Address: 1 Deer Park Dr, Suite Q, Monmouth Junction, NJ 08852, USA