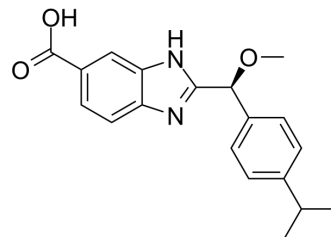


MLKL-IN-1

Cat. No.:	HY-139878
CAS No.:	2837019-30-2
Molecular Formula:	C ₁₉ H ₂₀ N ₂ O ₃
Molecular Weight:	324.37
Target:	Mixed Lineage Kinase
Pathway:	MAPK/ERK Pathway
Storage:	Please store the product under the recommended conditions in the Certificate of Analysis.



BIOLOGICAL ACTIVITY

Description	MLKL-IN-1 is a covalent MLKL inhibitor with a K _D of 50 μM.
-------------	--

REFERENCES

[1]. Rübhelke M, et al. Discovery and Structure-Based Optimization of Fragments Binding the Mixed Lineage Kinase Domain-like Protein Executioner Domain. *J Med Chem.* 2021 Nov 11;64(21):15629-15638.

Caution: Product has not been fully validated for medical applications. For research use only.

Tel: 609-228-6898

Fax: 609-228-5909

E-mail: tech@MedChemExpress.com

Address: 1 Deer Park Dr, Suite Q, Monmouth Junction, NJ 08852, USA