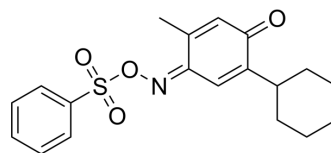


## ML233

Cat. No.:	HY-125976
CAS No.:	2080311-92-6
Molecular Formula:	C <sub>19</sub> H <sub>21</sub> NO <sub>4</sub> S
Molecular Weight:	359.44
Target:	Apelin Receptor (APJ)
Pathway:	GPCR/G Protein
Storage:	Please store the product under the recommended conditions in the Certificate of Analysis.



### BIOLOGICAL ACTIVITY

Description	ML233 is a non-peptide based potent apelin receptor (APJ) agonist (EC <sub>50</sub> =3.7 μM). ML233 displays >21-fold selective over the closely related angiotensin 1 (AT1) receptor (>79 μM) <sup>[1]</sup> .
IC <sub>50</sub> & Target	EC <sub>50</sub> : 3.7 μM (Apelin receptor) <sup>[1]</sup>
In Vitro	ML233 shows potentially significant binding against several other receptors, including the 5-HT <sub>1A</sub> , α <sub>2C</sub> adrenergic, and benzylpiperazine receptors and norepinephrine transporter. ML233 shows some toxicity (LC <sub>50</sub> =25.8 μM) toward human hepatocytes <sup>[1]</sup> . MCE has not independently confirmed the accuracy of these methods. They are for reference only.

### REFERENCES

[1]. Khan P, et al. National Center for Biotechnology Information; 2011. Functional agonists of the apelin (APJ) receptor. In Probe Reports from the NIH Molecular Libraries Program.

[2]. Pasha Khan, et al. National Center for Biotechnology Information; 2011. Functional agonists of the apelin (APJ) receptor. In Probe Reports from the NIH Molecular Libraries Program.

**Caution: Product has not been fully validated for medical applications. For research use only.**

Tel: 609-228-6898

Fax: 609-228-5909

E-mail: tech@MedChemExpress.com

Address: 1 Deer Park Dr, Suite Q, Monmouth Junction, NJ 08852, USA