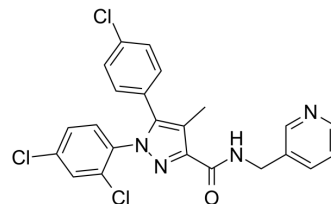


MJ15

Cat. No.:	HY-103327
CAS No.:	944154-76-1
Molecular Formula:	C ₂₃ H ₁₇ Cl ₃ N ₄ O
Molecular Weight:	471.77
Target:	Cannabinoid Receptor
Pathway:	GPCR/G Protein; Neuronal Signaling
Storage:	Please store the product under the recommended conditions in the Certificate of Analysis.



BIOLOGICAL ACTIVITY

Description	MJ15 is a potent and selective CB1 receptor antagonist with a K _i of 27.2 pM and an IC ₅₀ of 118.9 pM for rat CB1 receptors. MJ15 exhibits potency in obesity and hyperlipidemia models. MJ15 inhibits food intake and increases in body weight in diet-induced obese rats and mice ^[1] .	
IC ₅₀ & Target	rCB1-R 27.2 pM (K _i)	rCB1-R 118.9 pM (IC ₅₀)

REFERENCES

[1]. Chen W, et al. Novel selective antagonist of the cannabinoid CB1 receptor, MJ15, with prominent anti-obesity effect in rodent models. *Eur J Pharmacol.* 2010 Jul 10;637(1-3):178-85.

Caution: Product has not been fully validated for medical applications. For research use only.

Tel: 609-228-6898

Fax: 609-228-5909

E-mail: tech@MedChemExpress.com

Address: 1 Deer Park Dr, Suite Q, Monmouth Junction, NJ 08852, USA