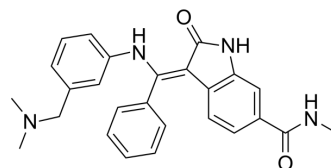


## MEK inhibitor

<b>Cat. No.:</b>	HY-12202		
<b>CAS No.:</b>	334951-92-7		
<b>Molecular Formula:</b>	C <sub>26</sub> H <sub>26</sub> N <sub>4</sub> O <sub>2</sub>		
<b>Molecular Weight:</b>	426.51		
<b>Target:</b>	MEK		
<b>Pathway:</b>	MAPK/ERK Pathway		
<b>Storage:</b>	Powder	-20°C	3 years
		4°C	2 years
	In solvent	-80°C	2 years
		-20°C	1 year



## SOLVENT & SOLUBILITY

### In Vitro

DMSO : 50 mg/mL (117.23 mM; Need ultrasonic)

Concentration	Solvent	Mass		
		1 mg	5 mg	10 mg
Preparing Stock Solutions	1 mM	2.3446 mL	11.7231 mL	23.4461 mL
	5 mM	0.4689 mL	2.3446 mL	4.6892 mL
	10 mM	0.2345 mL	1.1723 mL	2.3446 mL

Please refer to the solubility information to select the appropriate solvent.

### In Vivo

- Add each solvent one by one: 10% DMSO >> 40% PEG300 >> 5% Tween-80 >> 45% saline  
Solubility: ≥ 2.5 mg/mL (5.86 mM); Clear solution
- Add each solvent one by one: 10% DMSO >> 90% (20% SBE-β-CD in saline)  
Solubility: ≥ 2.5 mg/mL (5.86 mM); Clear solution
- Add each solvent one by one: 10% DMSO >> 90% corn oil  
Solubility: ≥ 2.5 mg/mL (5.86 mM); Clear solution

## BIOLOGICAL ACTIVITY

### Description

MEK inhibitor is a potent MEK inhibitor with antitumor potency.

### IC<sub>50</sub> & Target

MEK

### In Vitro

MEK inhibitor is a potent MEK inhibitor. MEK is a kinase enzyme which phosphorylates MAPKs. The activated MAPK leads to the phosphorylation of downstream transcription factors that regulate various responses such as stress signaling, pathogen response, and hormone signaling.

---

MCE has not independently confirmed the accuracy of these methods. They are for reference only.

---

## CUSTOMER VALIDATION

---

- Nucleic Acids Res. 2018 Nov 2;46(19):10195-10215.

See more customer validations on [www.MedChemExpress.com](http://www.MedChemExpress.com)

**Caution: Product has not been fully validated for medical applications. For research use only.**

Tel: 609-228-6898

Fax: 609-228-5909

E-mail: [tech@MedChemExpress.com](mailto:tech@MedChemExpress.com)

Address: 1 Deer Park Dr, Suite Q, Monmouth Junction, NJ 08852, USA