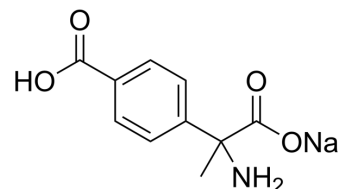


MCPG sodium

Cat. No.:	HY-103570
CAS No.:	1303994-09-3
Molecular Formula:	C ₁₀ H ₁₀ NNaO ₄
Molecular Weight:	231.18
Target:	mGluR
Pathway:	GPCR/G Protein; Neuronal Signaling
Storage:	Please store the product under the recommended conditions in the Certificate of Analysis.



BIOLOGICAL ACTIVITY

Description	MCPG is a carboxylic phenyl glycine. MCPG can block metabotropic glutamate receptor (mGluR)(HY-15129) and has antagonistic activity of mGluR subtype. MCPG can be used to study the induction and maintenance of long-term potentiation (LTP) ^[1] .
In Vitro	MCPG (300 μM, 1, and 3 mM) inhibits the concentration-dependent increase of phosphoinositol (PPI) hydrolysis induced by 1S, 3R-aminocyclopentane-1, 3-dicarboxic acid (ACPD) in hippocampus sections ^[1] . MCPG (20 mM, 200 mM) has a selective blocking effect on long-term potentiation (LTP) (20 mM), and also inhibits tetanus-induced short-term potentiation (STP) (200 mM) ^[1] . MCE has not independently confirmed the accuracy of these methods. They are for reference only.
In Vivo	MCPG (Intracerebroventricular injection) can eliminate the enhancement of field excitatory postsynaptic potential (fEPSP) in the alveolar gyrus induced by tedium stimulation in male Wistar rats ^[1] . MCE has not independently confirmed the accuracy of these methods. They are for reference only.

REFERENCES

[1]. Riedel G, et al. Inhibition of long-term potentiation in the dentate gyrus of freely moving rats by the metabotropic glutamate receptor antagonist MCPG. J Neurosci. 1995 Jan;15(1 Pt 1):87-98.

Caution: Product has not been fully validated for medical applications. For research use only.

Tel: 609-228-6898

Fax: 609-228-5909

E-mail: tech@MedChemExpress.com

Address: 1 Deer Park Dr, Suite Q, Monmouth Junction, NJ 08852, USA