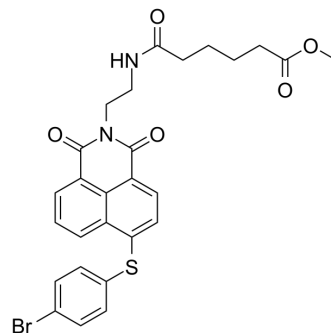


MCL-1/BCL-2-IN-3

Cat. No.:	HY-129701		
CAS No.:	2163793-55-1		
Molecular Formula:	C ₂₇ H ₂₅ BrN ₂ O ₃ S		
Molecular Weight:	569.47		
Target:	Bcl-2 Family		
Pathway:	Apoptosis		
Storage:	Powder	-20°C	3 years
		4°C	2 years
	In solvent	-80°C	6 months
		-20°C	1 month



SOLVENT & SOLUBILITY

In Vitro

DMSO : 17.86 mg/mL (31.36 mM; Need ultrasonic)

Concentration	Mass		
	1 mg	5 mg	10 mg
1 mM	1.7560 mL	8.7801 mL	17.5602 mL
5 mM	0.3512 mL	1.7560 mL	3.5120 mL
10 mM	0.1756 mL	0.8780 mL	1.7560 mL

Please refer to the solubility information to select the appropriate solvent.

BIOLOGICAL ACTIVITY

Description

MCL-1/BCL-2-IN-3 (Compound 2) is a potent and selective Mcl-1 and Bcl-2 dual inhibitor with IC₅₀s of 5.95 and 4.78 μM, respectively^[1].

REFERENCES

[1]. Wang Z, et al. Proteolysis Targeting Chimeras for the Selective Degradation of Mcl-1/Bcl-2 Derived from Nonselective Target Binding Ligands. J Med Chem. 2019 Sep 12;62(17):8152-8163.

Caution: Product has not been fully validated for medical applications. For research use only.

Tel: 609-228-6898

Fax: 609-228-5909

E-mail: tech@MedChemExpress.com

Address: 1 Deer Park Dr, Suite Q, Monmouth Junction, NJ 08852, USA