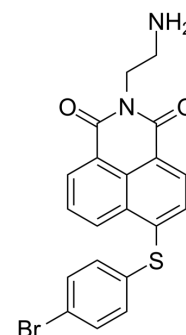


MCL-1/BCL-2-IN-2

Cat. No.:	HY-129700		
CAS No.:	2163793-44-8		
Molecular Formula:	C ₂₀ H ₁₅ BrN ₂ O ₂ S		
Molecular Weight:	427.31		
Target:	Bcl-2 Family		
Pathway:	Apoptosis		
Storage:	Powder	-20°C	3 years
		4°C	2 years
	In solvent	-80°C	2 years
		-20°C	1 year



SOLVENT & SOLUBILITY

In Vitro

DMSO : 5 mg/mL (11.70 mM; ultrasonic and warming and heat to 60°C)

Concentration	Mass		
	1 mg	5 mg	10 mg
1 mM	2.3402 mL	11.7011 mL	23.4022 mL
5 mM	0.4680 mL	2.3402 mL	4.6804 mL
10 mM	0.2340 mL	1.1701 mL	2.3402 mL

Please refer to the solubility information to select the appropriate solvent.

BIOLOGICAL ACTIVITY

Description

MCL-1/BCL-2-IN-2 (Compound 6) is a potent and selective Mcl-1 and Bcl-2 dual inhibitor^[1].

REFERENCES

[1]. Wang Z, et al. Proteolysis Targeting Chimeras for the Selective Degradation of Mcl-1/Bcl-2 Derived from Nonselective Target Binding Ligands. J Med Chem. 2019 Sep 12;62(17):8152-8163.

Caution: Product has not been fully validated for medical applications. For research use only.

Tel: 609-228-6898

Fax: 609-228-5909

E-mail: tech@MedChemExpress.com

Address: 1 Deer Park Dr, Suite Q, Monmouth Junction, NJ 08852, USA